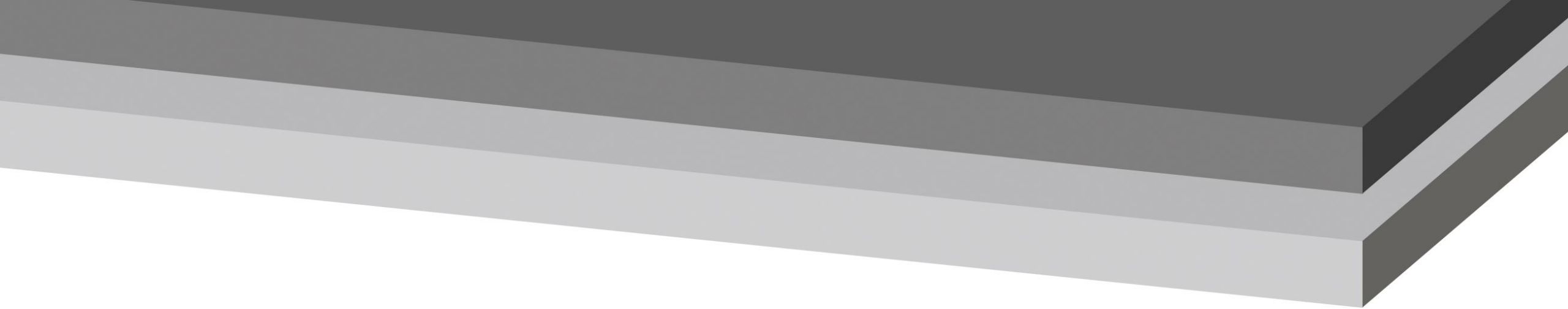

DURCON®

A WILSONART COMPANY

Why Buy
SOLICOR-CR
worksurfaces



DURCON
A WILSONART COMPANY

Solicor – Chemical Resistance



✗ Surface Edge without Solicor-CR



✓ Surface Edge **with Solicor-CR**



**COLOR-THROUGH
NO BLACK CORE**



CHEMICAL RESISTANT
lab-grade tested



LIGHTWEIGHT
only 7.4 lbs/ft² [36 kg/m²]

Solicor-CR Performance Characteristics

Color-through Core

Color-match with Epoxy

Lab-grade Chemical Resistance

Lightweight & Easy to Fab

Class A Fire Rating

UV Light Resistance

DURCON[®]

A WILSONART COMPANY

Solicor-CR Features & Benefits

CHEMICAL RESISTANCE



Solicor-CR sets the industry standard for chemical resistance, providing designers and builders with a robust combination of performance and aesthetics.

FIRE RESISTANCE



Solicor-CR is rated **CLASS A** for fire and heat resistance, yet another attribute aligning it squarely with the laboratory grade market.

MOISTURE RESISTANCE



Moisture resistance, even for the harshest acids, bases, solvents, and any other corrosive in a laboratory environment.

COST-EFFECTIVE



Solicor-CR is cost advantageous, often requiring less upfront expense as well as lower life cycle costs. Guaranteed by our industry-best 10-year warranty.

EASY TO INSTALL



At 7.4 lbs per square foot, the lightweight Solicor-CR is easy to transport, modify and install on the jobsite.

AESTHETIC APPEAL



Black core... No more. Gray compact with a gray core, and graphite compact with a graphite core set the new standard for an ultra-modern lab appearance.

LIGHTWEIGHT



Solicor-CR worksurfaces are light enough to be recommended for both horizontal and vertical applications. Experience exceptional strength without all the weight.

IMPACT & SCRATCH



Solicor-CR outperforms all competitors and sets a new standard for scratch and impact resistance. Full testing data available upon request.

USA MADE



Proudly manufactured & fabricated in the USA.

UV LIGHT RESISTANCE

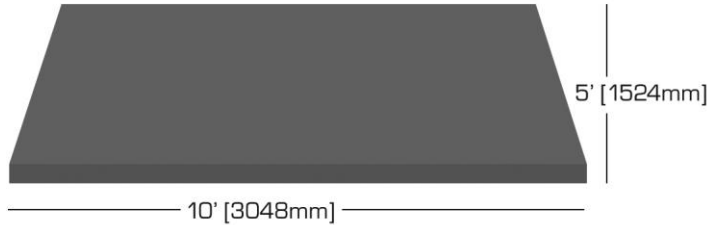


Using ultraviolet light to test prolonged exposure to direct sunlight, Solicor-CR coloration experienced unnoticeable variance from start to finish.

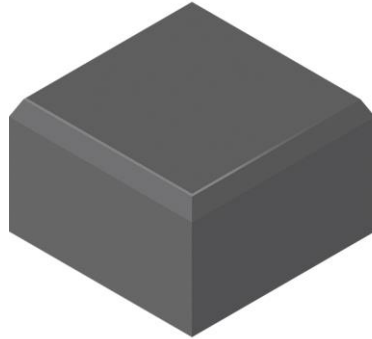


Solicor-CR Product Availability

SHEET SIZE AVAILABLE IN 5' X 10'



INITIAL COLOR AVAILABILITY IN GRAPHITE & GRAY

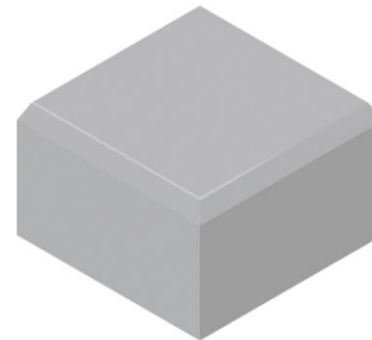
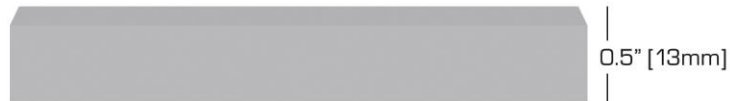


GRAPHITE

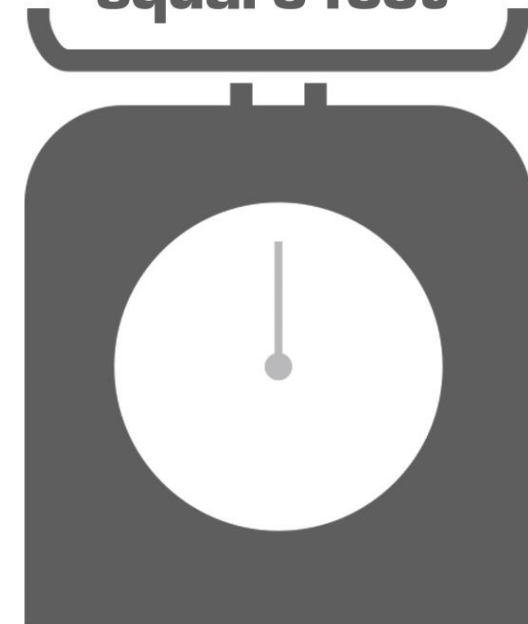
LIGHTWEIGHT & EASY TO INSTALL

7.4
lbs per
square foot

THICKNESSES AVAILABLE IN 1.0", 0.75", 0.5" & 0.375"



GRAY

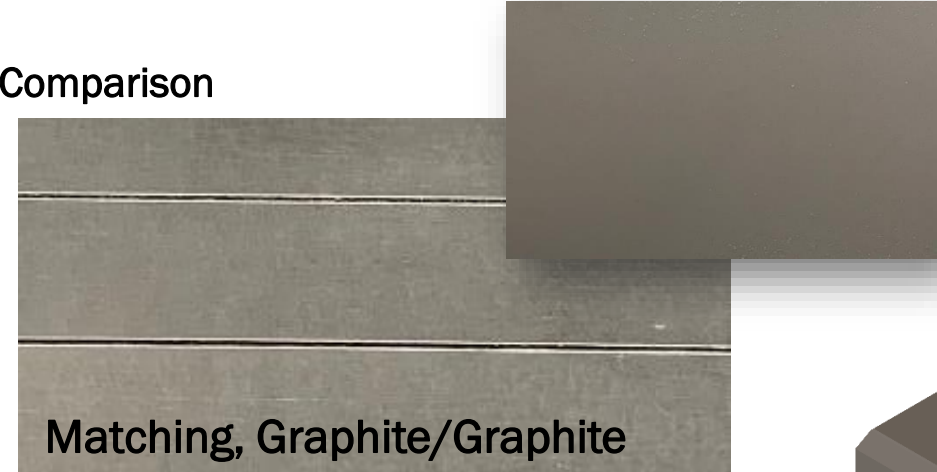


Solicor-CR UV Light Resistance

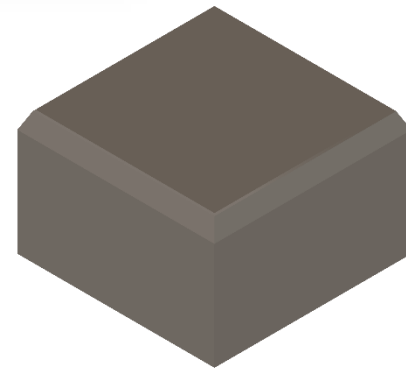
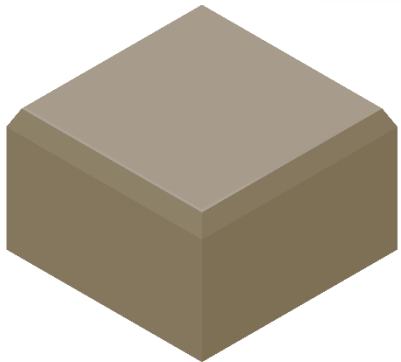
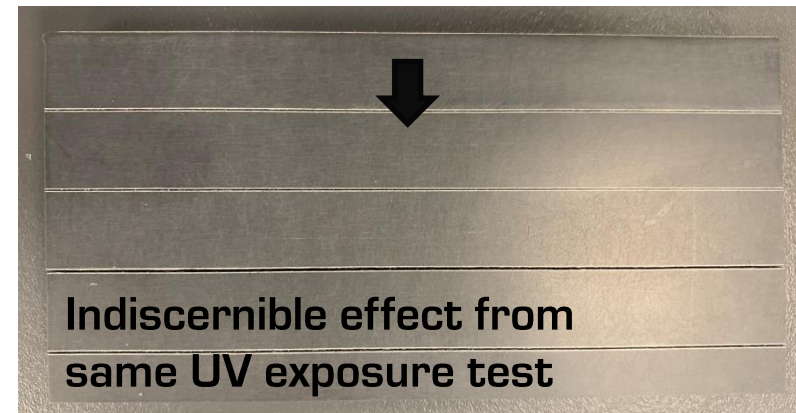
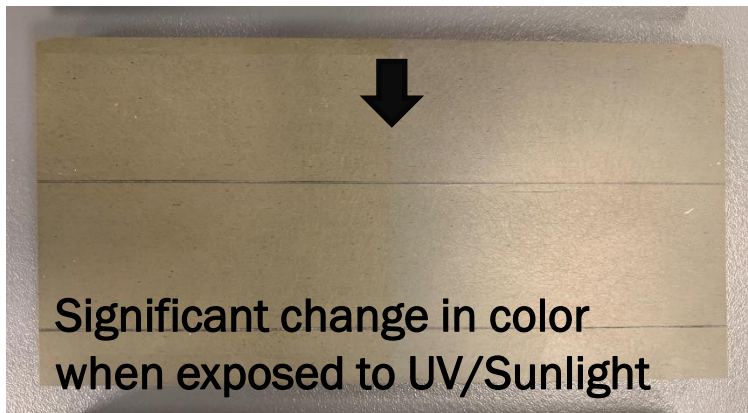
Competitor [Slate Grey]

Durcon Solicor-CR [Graphite]

Surface/Edge Comparison



Edge Appearance after UV Light Testing



Worksurface Materials Comparison

Material	Chemical Resistance	Class A Fire Rating	Heat Resistance	Moisture Resistance	Impact & Scratch	UV Light Resistance	Edge Consistency
Epoxy Resin	✓	✓	✓	✓	✓	✓	✓
Solicor-CR Lab Grade	✓	✓	✓	✓	✓	✓	✓
Solid Phenolic Compact (SPC-CR) Lab Grade	✓	—	✓	✓	✓	✓	✗
Competitor Lab Grade	✓	✓	✓	✓	✓	✗	—

KEY: ✓ Best
 ✓ Good
 — Fair
 ✗ Poor



Solicor-CR Test Results Summary

FIRE TESTING RESULTS **RATED: CLASS A**



Time to Ignition = 28.8 sec
Max Flamespread Distance = 6.74 feet
Time to Max Spread = 7 min 27 sec

CHEMICAL TESTING SUMMARY



ITEMS	NO. REAGENT WITH 3 RATINGS
Volatile Subtotal	0
Non-volatile Subtotal	0

Exceeds Requirement of No More than Four (4) Level 3 Conditions

*Results for Durcon Gray

SOLICOR-CR worksurfaces

PHYSICAL TEST RESULTS



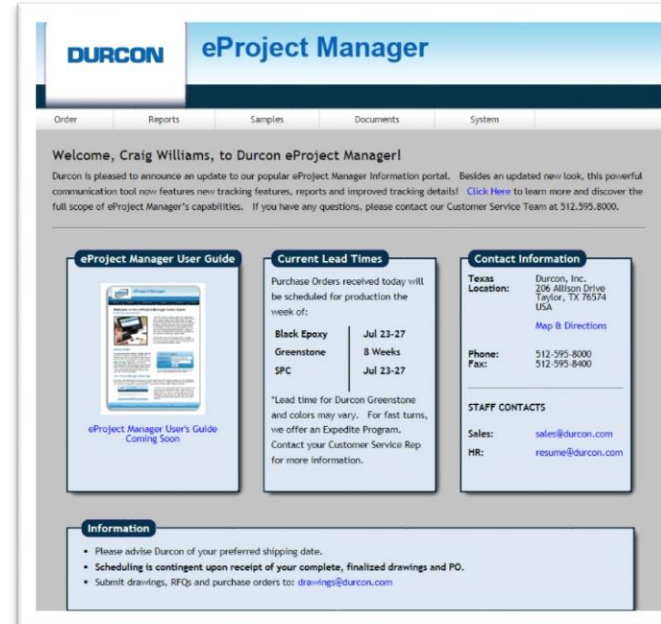
Standard	Results*
Dry Heat Resistance	Rating 5 (Best)
Radiant Heat Resistance	284 Seconds
Large Ball Impact	1981 MM
Moisture Absorption	1.07%
Scratch	5 Newtons
Lightfastness Fade	Rating 4

*Results for Durcon Gray



Durcon Customer Support Advantages

- **eProject Manager**
 - [Click here to login](#)
- **Intuitive Dashboard & Navigation**
 - Upload files
 - [Order samples](#)
 - Check order status, shipping & more
- [Resource document library](#)
 - i.e. spec sheets, manuals & guides
- **Responsive & friendly Customer Service team**



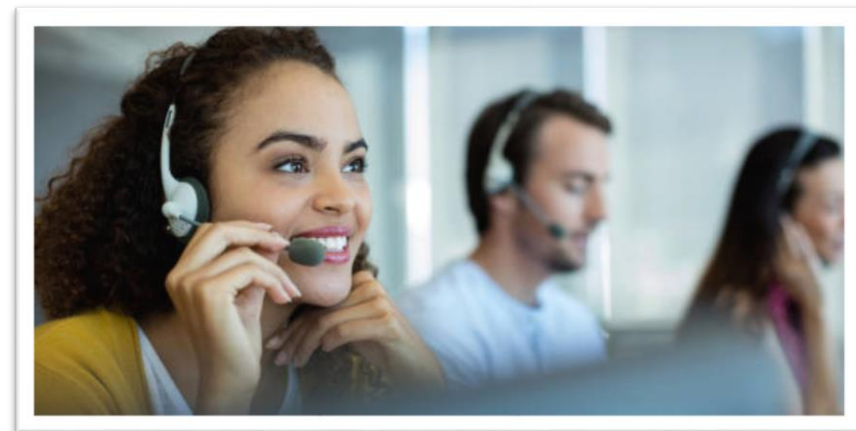
Easy to use dashboard



Search by job phase



Search by job type



Durcon Quality Assurance

- Quality Checkpoints
 - 3x dimensional
 - 4x visual
 - Fabrication database
- Continuous Improvements
 - Best Practice training
 - Monthly Operational Excellence Review
 - Daily customer feedback communication
- ISO 9001:2015 Certified



Certifications & Memberships



ISFA Member – International Surface Fabricators Association

ISO 9001:2015 – International Organization for Standardization certified

Greenguard Gold – Low chemical emissions

SCS Certified – Minimum 10% post-consumer recycled glass content

NSF International – Tops safe to use in food prep areas certification

SEFA Member – Scientific Equipment & Furniture Association, Executive Member

USGBC Member – U.S. Green Building Council

AIA Member – American Institute of Architects

Durcon products are proudly manufactured & fabricated in the USA