

**DURCON
EPOXY
PRODUCT
CATALOG**



DURCON[®]
A WILSONART COMPANY



SUPERIOR QUALITY

Durcon A Wilsonart Company® epoxy resin is widely considered the industry standard for quality lab-grade worksurfaces. To achieve this reputation of consistent quality, we utilize finely tuned production systems combined with longstanding manufacturing and engineering expertise. These practices are what enable us to set the bar for quality expectations.

EXCEPTIONAL CUSTOMER SERVICE

Durcon takes pride in the level of service we provide to each of our clients. From estimating all the way to shipping, Durcon's dedicated team is responsive and attentive, leading to fast, accurate turnarounds. Every order is continuously tracked via our proprietary **eProject Manager** software, allowing customers to monitor the status of their order at any time, from anywhere.

A GLOBAL PRESENCE

Durcon International supplies the world marketplace with prompt, accurate shipments manufactured precisely to customer specifications around the globe. No matter your location, Durcon has you covered.



INDUSTRY USES

Durcon worksurfaces are ideal for K-12 & university labs, as well as research & development environments in the medical, government, pharmaceutical industries, and more.



PERFORMANCE

Durcon provides high-performance systems and support with every epoxy resin product.

- Decades of experience
- Innovative solutions
- Fabrication capacity
- Technical support staff
- Global distribution network

SAFETY & DESIGN

Durcon worksurface systems combine safety, functionality and design to enhance aesthetics while keeping users safe.

- Edge finish options
- Durability
- Material certifications
- Color options
- Eco-conscious alternatives

INTEGRATION

Durcon provides a complete system of epoxy resin worksurfaces, sinks and accessories, ensuring integrated consistency throughout the lab setting.

- Workstations
- Sinks & components
- Fume hood bases
- Troughs
- Pegboards

MADE FOR LABORATORIES

Durcon worksurface systems are monolithic epoxy resin, molded using a unique process which includes a special curing stage to ensure a complete chemical reaction throughout the material. The result is a lab-grade, uniform worksurface of the highest quality.

PRODUCT CONFIGURATIONS

With numerous safety, function and style options, virtually any facility configuration can be achieved using available Durcon components.

- Marine edge containment tops
- DrainTops
- Balance tables, Isotops & Isopads
- DropIn & undermount sinks
- Wall mount, utility & specialty sinks
- ADA compliant sinks

ENVIRONMENTALLY CONSCIOUS

Durcon Greenstone epoxy worksurfaces are an eco-friendly alternative to standard Durcon epoxy that feature the same durability, performance and appearance, while meeting SCS requirements for post-consumer recycled content.



COMPLETE LAB SYSTEM



SUPERIOR PERFORMANCE

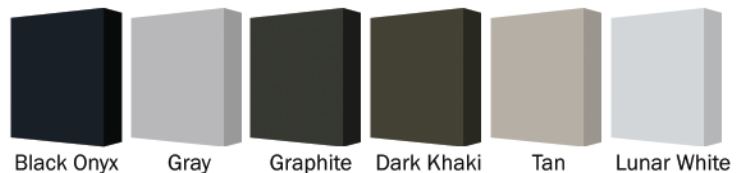
Durcon epoxy resin is formulated to balance the highest levels of performance, safety and resistance. All Durcon epoxy products are Greenguard Gold certified for safe indoor air quality, and NSF/ANSI 51 certified for use in food areas. Durcon epoxy products are also tested to SEFA chemical resistance standards as well as moisture, heat and flammability resistances and other physical properties.

COLOR OPTIONS

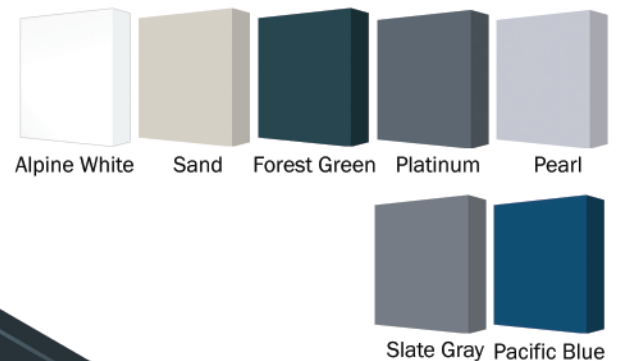
Black Onyx epoxy is the most popular worksurface color in the lab industry as the low-gloss matte finish is easier on user eyes and increases acuity for visual comparisons in the lab.

In addition to our Black Onyx, Durcon offers our epoxy material in several color palettes - including bespoke colors based on customer requirements.

DURCON CORE COLORS

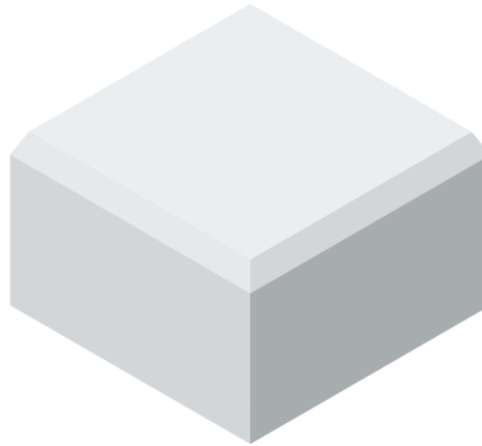


ADDITIONAL COLOR OFFERINGS



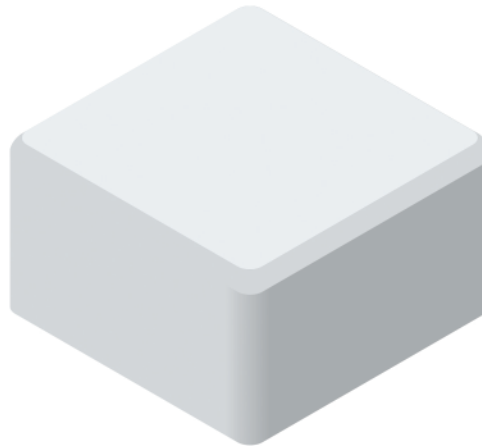
BEVEL EDGE FINISH

One inch thick Black Onyx ClassicTop worksurfaces with machine beveled edges are the laboratory industry global standard. Bevel edges are available in seamless lengths up to 96" [2438mm] on our ClassicTop worksurfaces and provide the greatest flexibility for many applications.



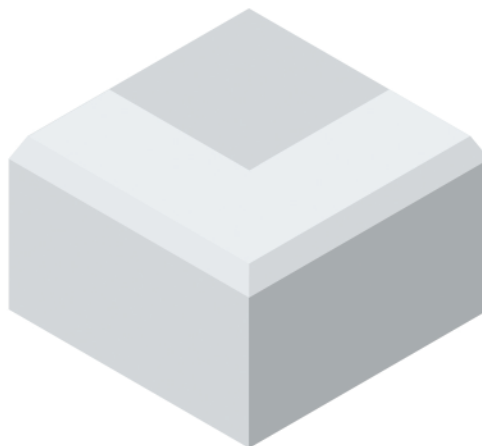
RADIUS EDGE FINISH

Also popular on ClassicTop worksurfaces is the 1/4" [6mm] radius edge finish option. This finish is fabricated to the same exacting standards as our bevel edge finish but features eased corners that provide additional safety and comfort for laboratory users.

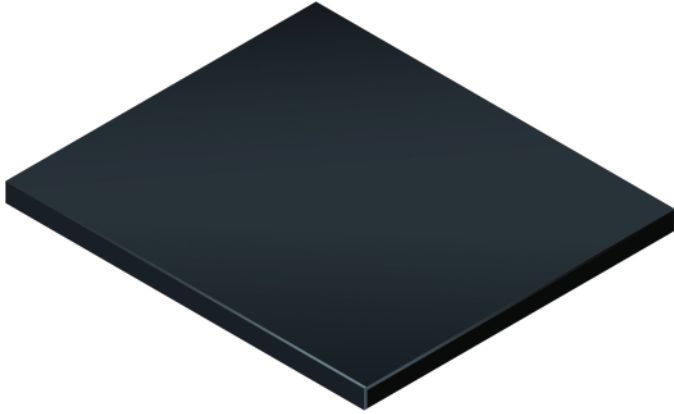


MARINE EDGE FINISH

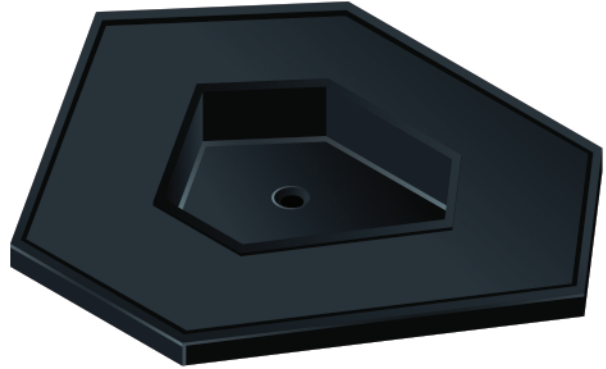
Marine edge finish worksurfaces are recommended for areas where liquid containment is a priority. These 1/4" [6mm] dished worksurfaces help protect casework flooring and lab users by containing spills on the work surface.



CLASSICTOP WORKSURFACES



TRIFACIA WORKSTATIONS



CLASSICTOP WORKSURFACES

ClassicTop worksurfaces are recommended for classrooms, laboratories and production facilities where seating or reconfiguration is required.

Available with machine beveled or radiused edges, ClassicTop worksurfaces are available in any size up to 96"x 72" [2438mm x 1829mm]. ClassicTop worksurfaces can be used for custom size and shape requirements, or when classic styling is an aesthetic preference.

TRIFACIA WORKSTATIONS

Trifacia tops are marine edge workstations that provide convenient access for up to three table worksurfaces. Trifacia epoxy resin sinks are also available.



NOTES: THIS AREA PROVIDED FOR ORDER DETAILS, QUESTIONS, IDEAS & MORE

.....

.....

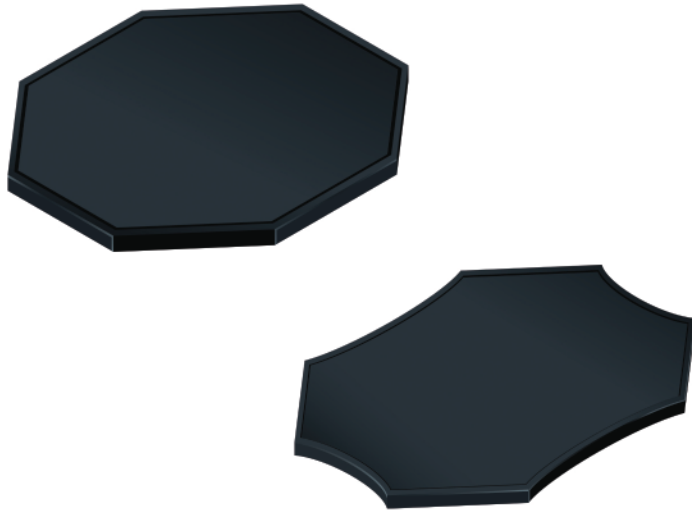
.....

.....

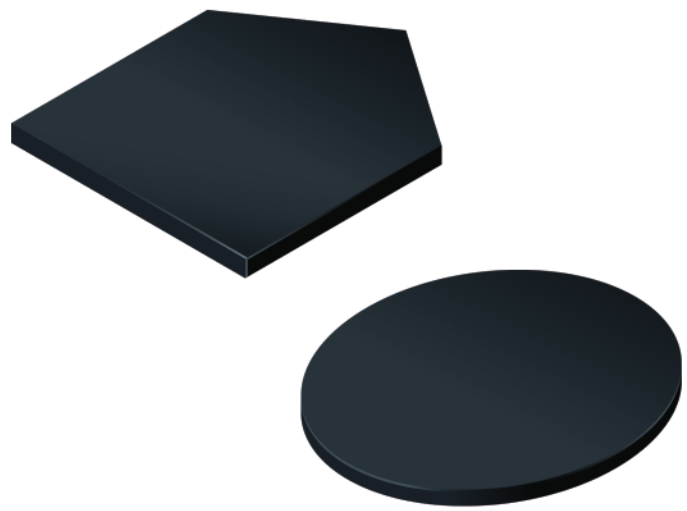
.....

.....

OCTAGONAL WORKSTATIONS



SPECIALTY & MOLDED SHAPES



OCTAGONAL WORKSTATIONS

Octagonal workstations are designed to accommodate multiple users. Tailored for educational and training purposes, this innovative design enables larger groups of students or technicians to gather around and view a single device or demonstration at the workstation.

Offered with a bevel, radius or marine edge finish, the octagonal workstation is available as a single piece, or with an epoxy resin trough or sink.



SPECIALTY & MOLDED SHAPES

Specialty work surface shapes are available for all types of teaching and laboratory environments. Quadrilaterals, hexagons and other shapes are molded in one seamless piece and ship from Durcon ready for installation, with or without sinks or troughs.

Many additional custom shapes - even asymmetrical pieces and belly cuts - can be fabricated to specification. With custom shapes, we recommend submitting drawings for quotation.



NOTES
.....

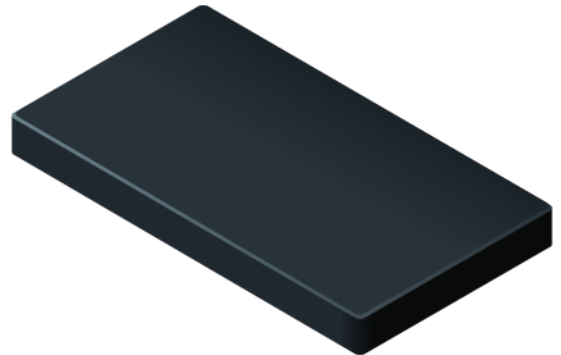
FUME HOOD BASES



BALANCE TABLES



ISOTOPS



FUME HOOD BASES

Durcon epoxy resin Fume Hood Bases provide a highly durable, chemical and heat resistant worksurface for the harshest of laboratory environments.

Available for most brands of fume hood cabinets, Durcon Fume Hood Bases are seamlessly molded up to 98" [2489mm] long and are surrounded by a 3/8" [10mm] integrally-molded containment rim designed to ease cleanups and prevent chemical spills from damaging casework.



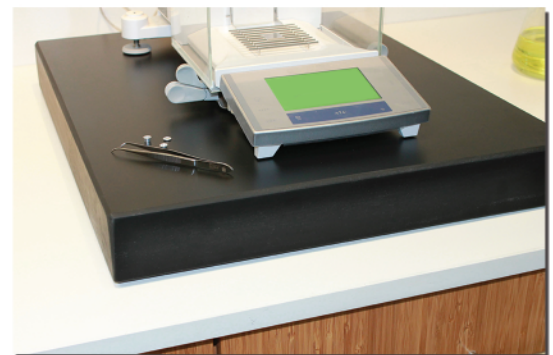
BALANCE TABLES

Epoxy resin Balance Tables provide superior stability for highly calibrated equipment. The top and legs are solid 2-1/2" [64mm] thick molded epoxy resin worksurfaces with a galvanised steel lateral support beam for additional strength and rigidity. Rubberized vibration reduction pads are also included to suppress floor vibrations and increase instrument accuracy. Balance Tables stand 30" [762mm] tall. Nominal worksurface dimensions are 35" x 24" [889mm x 610mm].

ISOTOPS & ISOPADS

IsoTops are 2-1/2" [64mm] thick countertop sections that provide the stability of a balance table on a benchtop, allowing easy access to adjoining surfaces and utilities. IsoTops are thicker tops that install in-line with other epoxy worksurfaces. Due to the thickness and weight of these tops, special considerations should be taken into account to ensure adequate cabinet support strength.

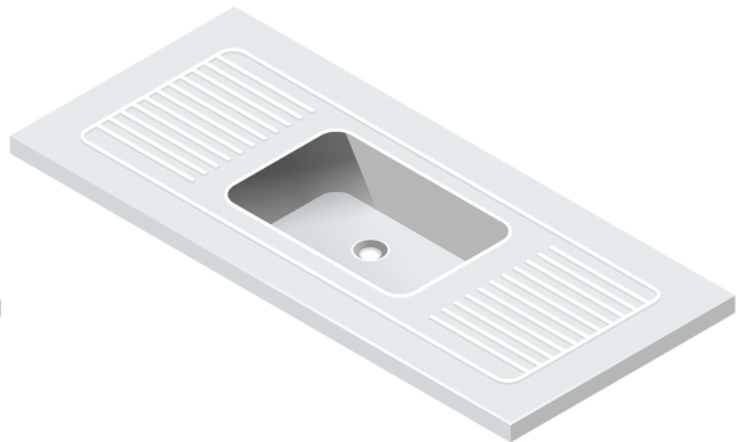
Isopads are mobile 2-1/2" x 18" x 22" epoxy resin pieces that can be placed around the lab to provide vibration damping and stability in any location needed.



DRAINTOP - SINK RIGHT



DRAINTOP - SINK CENTER



DRAINTOPS

DrainTop are specially designed worksurfaces that gently slope from the containment rim to the sink area for superior liquid drainage. The molded drain board sections offer curved, raised ribs that facilitate glassware drying and cleanups. The sink cutout can accommodate a Dropln or Double Dropln sink.

Designed for flexibility, DrainTop configurations are available with 3 sink locations, allowing them to be used at the end of an island or peninsula, or in wall runs as 60" [1524mm] sections.

DRAINTOP CONFIGURATIONS

LENGTH (in)	WIDTH (in)	MODEL	LENGTH (mm)	WIDTH (mm)
60	26-30	450 (Sink Center)	1524	660-763
60	26-32	454 (Sink Right)	1524	660-813
60	26-32	455 (Sink Left)	1524	660-813



DRAIN GROOVES

Drain grooves can be machined on one or both sides of either Dropln or undermount sinks, per specification. These recessed slots decline toward the sink basin, facilitating worksurface drainage while providing a temporary labware drying area.

NOTES

.....

.....

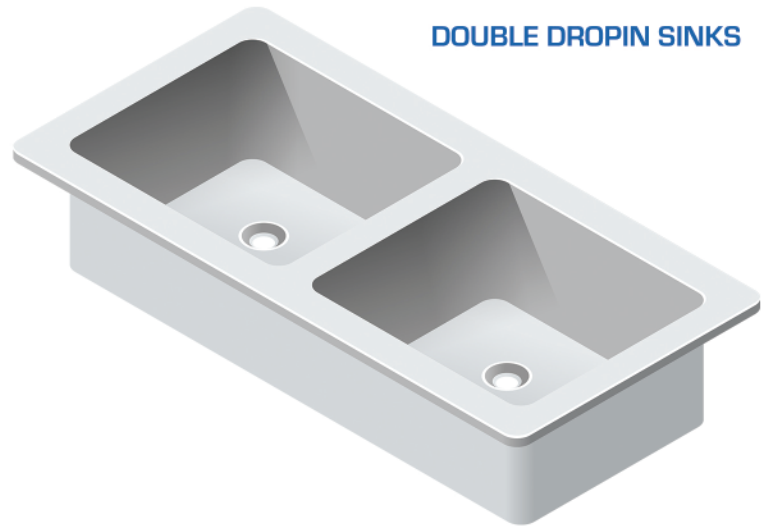
.....

.....

DROPIN SINKS



DOUBLE DROPIN SINKS

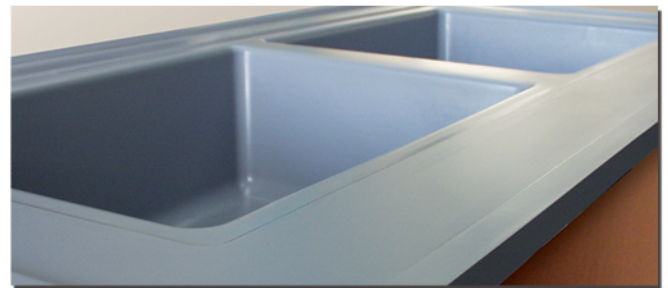


DROPIN SINKS

Dropln sinks were introduced by Durcon in 1992 and quickly became the industry standard in laboratory sinks due to their ease of installation and the added safety they bring to a lab environment.

Dropln sinks are top mounted into a recessed cutout, eliminating the need for a support system underneath the sink. This simplified method of installation seals the sink cutout and eliminates worksurface overhang above the inner walls of a standard undermount sink basin, which can gather residual chemicals and bacteria. All Dropln sink surfaces are clearly visible and radiused for easy cleaning.

Dropln sinks list and dimensions on Page 10.



DOUBLE DROPIN SINKS

Molded one-piece Double Dropln sinks are also available. Alternatively, a pair of single Dropln sinks can be installed side-by-side with a 1" worksurface strip between the two installed sinks.

ADA SINKS

Durcon offers several shallow basin, graduated depth sinks that are ADA compliant. By eliminating the need for support systems under the sink, ADA Dropln sinks accommodate lab users with special needs and help conform to Americans with Disabilities Act guidelines.



ADA SINKS



DROPIN SINK DIMENSIONS [IMPERIAL & METRIC]

MODEL	OUTLET	WEIGHT	LENGTH	WIDTH	DEPTH	X-OUTLET	Y-OUTLET	WEIGHT	LENGTH	WIDTH	DEPTH	X-OUTLET	Y-OUTLET
Number	Placement	[lbs]	[inches]	[inches]	[inches]	[inches]	[inches]	[kg]	[mm]	[mm]	[mm]	[mm]	[mm]
D01C	Center	9	9	6	5.8	4.5	3	4.1	229	152	147	114	76
D03C	Center	16	12	8	5.8	6	4	7.3	305	203	147	152	102
A05	Corner	18	14	10	5	3.5	3.5	8.2	356	254	127	89	89
D05	Corner	24	14	10	6.25	3.5	3.5	10.9	356	254	159	89	89
D05C	Center	24	14	10	6.25	7	5	10.9	356	254	159	178	127
D06C	Center	34	12	12	12	6	6	15.4	305	305	152	152	152
A07	Corner	24	14	14	5	3.5	3.5	10.9	356	356	397	89	89
D08	Corner	25	15	8	6	3.5	3.5	11.3	381	203	152	89	89
D10E	End	22	16	8	6.75	4.5	4	10.0	406	203	171	114	102
D10C	Center	22	16	8	6.75	8	4	10.0	406	203	171	203	102
D15	Corner	30	16	12	8	3.5	3.5	13.6	406	305	203	89	89
D15C	Center	31	16	12	8	8	6	14.1	406	305	203	203	152
D19	Corner	42	16	16	9.56	3.5	3.5	19.1	406	406	244	89	89
D20	Corner	32	16	16	7.5	3.5	3.5	14.5	406	406	191	89	89
D21	Corner	58	16	16	15	3.5	3.5	26.3	406	406	381	89	89
D22C	Center	20	18	6.5	6	9	3.25	9.1	457	165	152	229	57
D24C	Center	30	18	14	10.5	9	6.825	13.6	457	356	267	229	173
A25	Corner	35	18	15	5	3.5	3.5	15.9	457	381	127	89	89
A25M	Corner	30	18	15	2.375	3.5	3.5	13.6	457	381	61	89	89
D25	Corner	39	18	15	7.88	3.5	3.5	17.7	457	381	73	89	89
A26	Corner	39	18	15	5.00 / 11.00	4.5	4.5	17.7	457	381	127 / 279	114	114
D30	Corner	41	18	15	10.75	3.5	3.5	18.6	457	381	273	89	89
D30C	Center	50	18	15	10.75	9	7.5	22.7	457	381	273	229	191
D30D	Corner	110	37.5	15	10.75	3.5	3.5	49.9	953	381	273	89	89
D32	Corner	49	18	15	15.13	3.5	3.5	22.2	457	381	384	89	89
D33	Corner	59	21	17	9.75	3.81	3.81	26.8	533	432	235	97	97
D33E	End	59	21	17	9.75	4.5	8.5	26.8	533	432	235	114	216
D45	Corner	61	21.5	15.5	11	4.75	4.75	27.7	546	394	279	121	121
D50	Corner	54	24	16	8.25	3.5	3.5	24.5	610	406	210	89	89
D50C	Center	54	24	16	8	12	8	24.5	610	406	203	305	203
D51	Corner	60	24	16	9.62	3.5	3.5	27.2	610	406	244	89	89
D52	Corner	77	24	18	11	3.5	3.5	34.9	610	457	279	89	89
D54	Corner	45	25	15	8	3.5	3.5	20.4	635	381	203	89	89
A55	Corner	51	25	15	4.75	3.5	3.5	23.1	635	381	121	89	89
D55	Corner	45	25	15	10	3.5	3.5	20.4	635	381	254	89	89
A56	Corner	72	25	15	5.00 / 11.00	4.5	4.5	32.7	635	381	127 / 279	114	114
D57	Corner	71	25	15	13.62	3.5	3.5	32.2	635	381	346	89	89
D58	Corner	79	25	15	17.75	3.5	3.5	35.8	635	381	451	89	89
D59	Corner	50	28	15	11.75	3.5	3.5	22.7	711	381	298	89	89
D61	Corner	94	30	16	17.75	4.5	4.5	42.6	762	406	451	114	114
D65C	Center	98	35.5	19.5	9.75	17.75	9.75	44.5	902	495	249	453	250
D68E	End	120	30	16	10	4.75	8	54.4	762	406	254	121	203
D70C	Center	77	24	16	15.5	12	8	34.9	610	406	394	305	203
D78C	Center	94	36	18	12	18	9	42.6	914	457	305	457	229
DRS10	Center	14	10	Diameter	7.75		Center	6.4	254	Diameter	197		Center
DRS12	Center	18	12	Diameter	7.75		Center	8.2	305	Diameter	197		Center
DH20C	Center	65	30	26	7	14.77	14	29.5	762	660	178	375	356

ADA Compliant

ADA Compliant

ADA Compliant

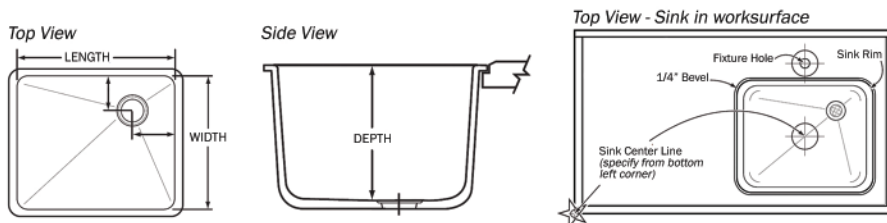
ADA Compliant

ADA Compliant

ADA Compliant

ADA Compliant

Popular sink models

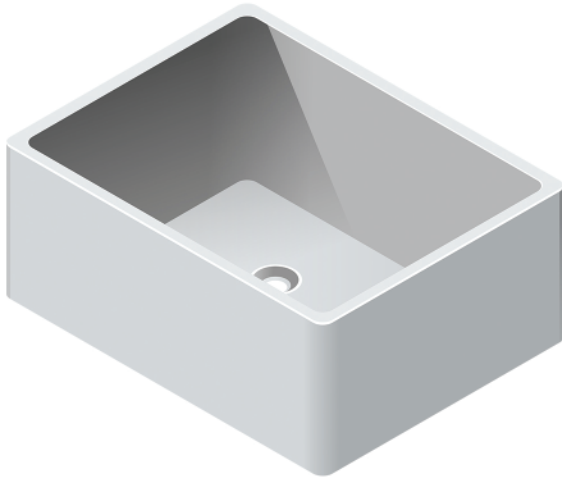


NOTES

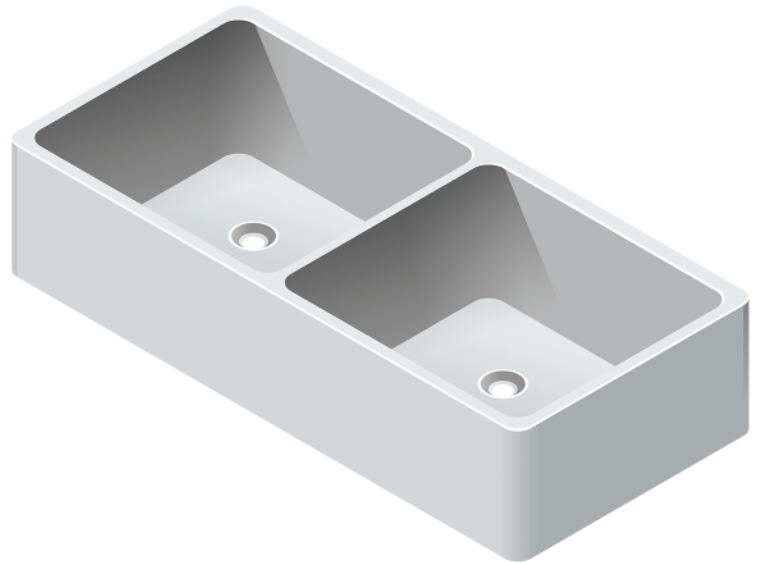
.....

.....

UNDERMOUNT SINKS



DOUBLE UNDERMOUNT SINKS



UNDERMOUNT SINKS

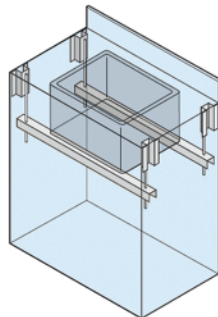
Durcon epoxy Undermount sinks have high chemical resistance, long-term durability and are available in a selection of sizes, making them a popular choice for this style of sink.

Undermount installation requires an under-sink support system (supplied separately). Durcon offers installation tips for these support systems in our *Installation Manual*. Consult your casework manufacturer for suggested installation methods and specific supplies required for a specified cabinet material.

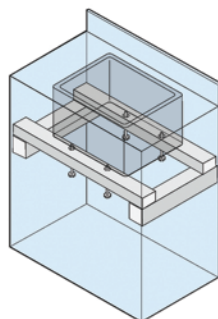
Undermount sinks list and dimensions on Page 12.

DOUBLE UNDERMOUNT SINKS

Undermount sinks can either be glued together as a pair or installed separately. Several designs are possible by using different sizes of sinks together. Please contact Durcon directly to determine the best approach for this type of configuration.



Hanging Support Installation



Frame Support Installation



UNDERMOUNT SINK DIMENSIONS [IMPERIAL & METRIC]

MODEL	OUTLET	WEIGHT	LENGTH	WIDTH	DEPTH	X-OUTLET	Y-OUTLET	WEIGHT	LENGTH	WIDTH	DEPTH	X-OUTLET	Y-OUTLET
Number	Placement	[lbs]	[inches]	[inches]	[inches]	[inches]	[inches]	[kg]	[mm]	[mm]	[mm]	[mm]	[mm]
U03C	Center	17	12	8	6	6	4	7.7	305	203	152	152	102
U05C	Center	22	14	10	6	7	5	10.0	356	254	152	178	127
U08C	Center	25	12	12	8	6	6	11.3	305	305	203	152	152
U10E	End	22	16	8	7	3.5	3.5	10.0	406	203	178	89	89
U15C	Center	34	16	12	8	8	6	15.4	406	305	203	203	152
U15E	End	34	16	12	8	4.5	6	15.4	406	305	203	114	152
U20	Corner	39	16	16	7.5	4	12	17.7	406	406	191	102	305
U23C	Center	54	16	16	12	8	8	24.5	406	406	305	203	203
U24C	Center	38	18	14	10.5	9	7	17.2	457	356	267	229	178
U25	Corner	40	18	15	8	3.5	3.5	18.1	457	381	203	89	89
U30	Corner	49	18	15	11	3.5	3.5	22.2	457	381	279	89	89
U30C	Center	49	18	15	11	9	7.5	22.2	457	381	279	229	191
U33C	Center	64	21	17	10	10.5	8.5	29.0	533	432	254	267	216
U33E	End	64	21	17	10	4.5	8.6	29.0	533	432	254	114	219
U35E	End	61	21	18	10	4.5	9	27.7	533	457	254	114	229
U40	Corner	47	21.3	15.5	7	4	4	21.3	541	394	178	102	102
U45	Corner	64	21.5	15.5	11	4	4	29.0	546	394	279	102	102
U49	Corner	68	22	14.5	10.6	4	3.5	30.8	559	368	270	102	89
U50C	Center	54	24	16	8	12	8	24.5	610	406	203	305	203
U50E	End	54	24	16	8	4	8	24.5	610	406	203	102	203
U51E	End	59	24	16	10	4.5	8	26.8	610	406	254	114	203
U52E	End	77	23.6	17.6	10.75	4	9	34.9	600	448	273	102	229
U53E	End	85	24.4	18.4	16.75	4.25	10.5	38.6	621	468	425	184	267
U54	Corner	95	23	21	19.1	6.5	16	43.1	584	533	486	165	406
U55	Corner	60	25	15	10	3.5	3.5	27.2	635	381	254	89	89
U56C	Center	76	24	16	12	12	8	34.5	610	406	305	305	203
U59E	End	65	28	15	12	11.5	7.5	29.5	711	381	305	292	191
U60E	End	83	28	20	8.75	14	6.56	37.6	711	508	222	356	167
U61C	Center	141	30	18	18	9	15	64.0	762	457	457	229	381
U63E	End	75	31	17	10	4	8.5	34.0	787	432	254	102	216
U64C	Center	95	31.25	21.25	12	15.5	10.5	43.1	794	540	305	385	267
U65C	Center	100	35.5	19.6	10	9.8	17.8	45.4	902	497	254	250	453
U67C	Center	118	36	20	16	10	18	53.5	914	508	406	254	457
U71C	Center	108	43	15	11	7.5	21.5	49.0	1092	381	279	191	546
U72C	Center	179	43.3	15.3	16	7.7	21.7	81.2	1100	389	406	196	551
U73	Corner	150	38	21	19.1	15.8	5.25	68.0	965	533	485	402	133
U75C	Center	126	42	20	10	10	21	57.2	1067	508	254	254	533

Popular sink models

NOTES

.....

.....

.....

.....

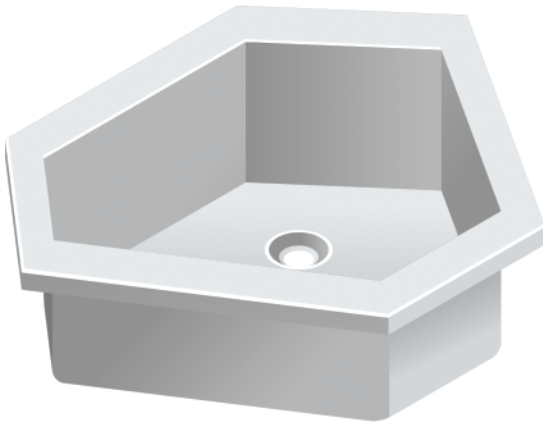
.....

.....

.....

.....

TRIFACIA SINKS



CURVED SINKS



TRIFACIA DROPLN SINKS

Trifacia Dropln sinks are designed for placement in Durcon Trifacia (hexagonal) workstations.

The large Trifacia Dropln sink basin is ideally suited for student workstations and is molded as one piece with coved interior corners for easy cleaning and maintenance.

ROUND & ELLIPTICAL SINKS



ROUND & ELLIPTICAL SINKS

These specialty sinks are functional complementary solutions for circular or octagonal worksurface shapes and add a customized look and feel to a laboratory environment. Round and elliptical sinks are available in both Dropln and undermount styles and are designed for installation at the center of a worksurface, or at the surface edge to fit the contours of a custom shaped top.

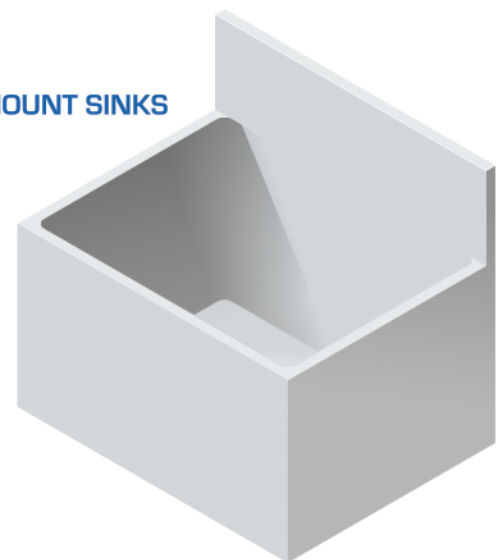
END & WALL MOUNT UTILITY SINKS

End and wall sinks are specially designed epoxy resin basins for placement at the end of wall runs, peninsulas and islands in order to provide a disposal outlet for liquids as well as a cleaning area for larger lab instruments and items.

These basins can be fabricated for fixtures or a trough in the integral backsplash. End and wall sinks are commonly mounted on wooden or metal frames in order to bring the basin to the desired height [frames supplied separately].

End and Wall Mount sinks list and dimensions on Page 14.

END & WALL MOUNT SINKS



END & WALL MOUNT SINK DIMENSIONS [IMPERIAL & METRIC]

MODEL Number	OUTLET Placement	WEIGHT [lbs]	LENGTH [inches]	WIDTH [inches]	DEPTH [inches]	HEIGHT [backsplash]	WEIGHT [kg]	LENGTH [mm]	WIDTH [mm]	DEPTH [mm]	HEIGHT [backsplash]
E46	Front	70	22	13.63	12.63	3.8	31.8	559	346	321	97
E47	Front	73	22	13.63	12.63	5.8	33.1	559	346	321	147
E48	Front	50	22	13.63	12.63	0.0	22.7	559	346	321	0
W08C	Center	46	14.62	14.65	11.88	4.31	20.9	448	372	289	186

SINK OUTLET & ACCESSORIES DIMENSIONS [IMPERIAL & METRIC]

MODEL Number	MATERIAL Product	DESCRIPTION	INSIDE DIAMETER [in]	OUTSIDE DIAMETER [in]	LENGTH [inches]	INSIDE DIAMETER [mm]	OUTSIDE DIAMETER [mm]	LENGTH [mm]	COLORS available
S03-R	Polypropylene	Sink Outlet*	1.4	3.3	3	36	84	76	Black, Gray, Alpine White
USS2	Polypropylene	Sink Stopper	-	1.4	-	-	36	-	Black
U-OE	Polypropylene	Open End Overflow	-	1.4	4,6,8,10	-	36	102, 152, 203, 254	Black
O.E.S.	Polypropylene	U-OE Strainer Cap	-	1.4	-	-	36	-	Black
S03	Epoxy Resin	Sink Outlet*	1.4	3.3	3	36	84	76	All except Black

*Plastic disc strainer included



FIELD ACCESSORIES

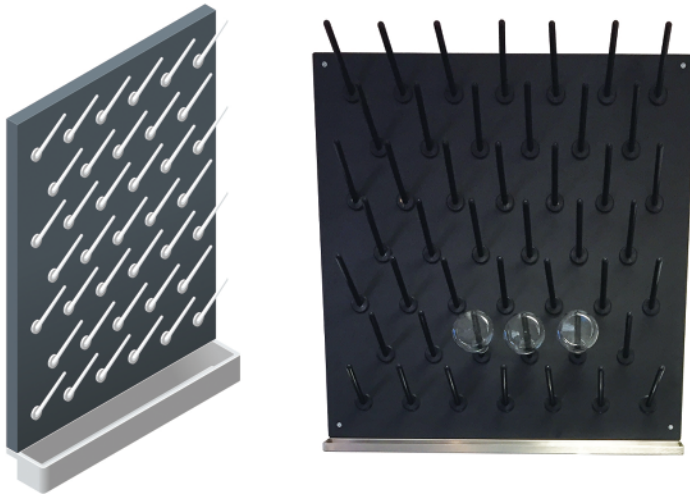
SKU Number	PRODUCT Name	PRODUCT Description
SPLY-INSTALLKIT-SMALL	Installation Kit - Small	Empty Tubes (2), Pad (1), Beefcloths (25)
SPLY-INSTALLKIT-MEDIUM	Installation Kit - Medium	Empty Tubes (4), Pads (2), Beefcloths (50)
SPLY-INSTALLKIT-LARGE	Installation Kit - Large	Empty Tubes (8), Pads (2), Beefcloths (100)
CALK-055-101	Color Matched Caulk, 5.5 oz	Black Onyx worksurface matching caulk
CALK-105-101	Color Matched Caulk, 10.5 oz	Black Onyx worksurface matching caulk
CALK-055-111	Color Matched Caulk, 5.5 oz	Graphite worksurface matching caulk
CALK-105-111	Color Matched Caulk, 10.5 oz	Graphite worksurface matching caulk
CALK-055-109	Color Matched Caulk, 5.5 oz	Gray worksurface matching caulk
CALK-105-109	Color Matched Caulk, 10.5 oz	Gray worksurface matching caulk
CALK-055-121	Color Matched Caulk, 5.5 oz	Lunar White worksurface matching caulk
CALK-105-121	Color Matched Caulk, 10.5 oz	Lunar White worksurface matching caulk
CALK-055-112	Color Matched Caulk, 5.5 oz	Tan worksurface matching caulk
CALK-105-112	Color Matched Caulk, 10.5 oz	Tan worksurface matching caulk
CALK-055-118	Color Matched Caulk, 5.5 oz	Dark Khaki worksurface matching caulk
CALK-105-118	Color Matched Caulk, 10.5 oz	Dark Khaki worksurface matching caulk
CALK-055-103	Color Matched Caulk, 5.5 oz	Pearl worksurface matching caulk
CALK-105-103	Color Matched Caulk, 10.5 oz	Pearl worksurface matching caulk

*Custom colors available upon request



PEGBOARDS & DRIP TRAYS

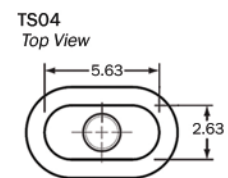
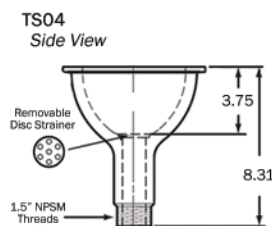
Epoxy resin Pegboards are supplied with oval polypropylene pegs set at a 30° horizontal angle for effective support and drainage of lab glassware. As an option, 2" [51mm] wide stainless steel drip trays are available for most pegboard sizes [PVC tubing included].



CUPSINKS

Cupsinks are small sink units designed to provide a convenient disposal site for liquid waste while maximizing available working space.

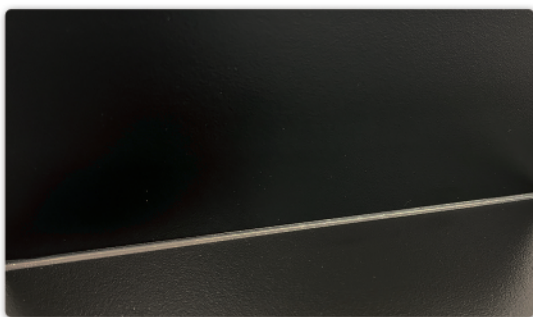
See Cupsink availability and dimensions on Page 16.



COLOR MATCHED CAULK

Durcon Color Matched Caulk is a 100% siliconized acrylic that is formulated to color match Durcon Epoxy, SPC and Solicor worksurfaces & sinks. The caulk is stain, mold & mildew resistant, stays flexible, water-resistant, and does NOT contain Etylene Glycol.

See full list of colors and sizes available on Page 14.



INSTALLATION KITS

Installation kits consist of our most-requested field items, and are offered as an easy kit to help improve the installation process.

Available in 3 sizes, see product ordering info on Page 14.



SMALL KIT

For jobs up to 90 linear feet
 2 Empty Caulk Tubes
 1 Non-abrasive Pad
 25 Beefcloth Rags

MEDIUM KIT

For jobs up to 180 linear feet
 4 Empty Caulk Tubes
 2 Non-abrasive Pads
 50 Beefcloth Rags

LARGE KIT

For jobs up to 360 linear feet
 8 Empty Caulk Tubes
 2 Non-abrasive Pads
 100 Beefcloth Rags

CUPSINK DIMENSIONS [IMPERIAL & METRIC]

MODEL Number	OUTLET Placement	LENGTH [inches]	WIDTH [inches]	DEPTH [inches]	EXT HEIGHT [inches]	LENGTH [mm]	WIDTH [mm]	DEPTH [mm]	EXT HEIGHT [mm]
TS04	Oval	5.63	2.63	3.75	8.31	143	67	95	211
TS05	Oval	5.7	2.8	3.7	9.1	145	71	94	231
TS07	Round	6	6	6	11.4	152	152	152	290
TS09	Round	8	8	6	9.5	203	203	152	241
TS12	Oval	8.88	2.63	5.75	10	225	67	146	254
TS15	Oval	10.88	3	5.25	9.63	276	76	133	244
TS18	Rectangle	13.56	4.38	5.83	9.93	344	111	148	252
CS4R*	Oval	6.3	3.1	4	8.1	160	79	102	206

*Polypropylene - Black, Gray, Alpine White

POLYPROPYLENE PARTS DIMENSIONS [IMPERIAL & METRIC]

MODEL Number	WEIGHT [lbs]	LENGTH [inches]	INSIDE DIAMETER [in]	OUTSIDE DIAMETER [in]	WEIGHT [kg]	LENGTH [mm]	INSIDE DIAMETER [mm]	OUTSIDE DIAMETER [mm]
PS03	0.5	2.5	1.5	3.375	0.2	64	38	86
POE	0.5	4, 6, 8	1	1.5	0.2	102, 152, 203	25	38
PBH	0.5	4, 6, 8	1	1.5	0.2	102, 152, 203	25	38

TROUGH DIMENSIONS [IMPERIAL]

MODEL Number	OUTLET Placement	WEIGHT [lbs]	LENGTH [inches]	WIDTH [inches]	DEPTH 1 [inches]	DEPTH 2 [inches]	X-OUTLET [inches]	Y-OUTLET [inches]
T2-1	As Required	48	72	3.9	3.8	4.5	-	-
T2-2	As Required	48	72	3.9	3.1	3.8	-	-
T1-1	As Required	48	72	6.6	3.8	4.5	-	-
T1-2	As Required	48	72	6.6	3	3.8	-	-
T1-3	As Required	48	72	6.6	2.3	3	-	-
DT36	Off-Center	29	34.5	6.4	-	3.6	13.4	3.2
DT48	Off-Center	39	46.6	6.4	-	3.5	19.4	3.2

Side View



Top View



TROUGH DIMENSIONS [METRIC]

MODEL Number	OUTLET Placement	WEIGHT [kg]	LENGTH [mm]	WIDTH [mm]	DEPTH 1 [mm]	DEPTH 2 [mm]	X-OUTLET [mm]	Y-OUTLET [mm]
T2-1	As Required	21.8	1829	99	97	114	-	-
T2-2	As Required	21.8	1829	99	79	97	-	-
T1-1	As Required	21.8	1829	168	97	114	-	-
T1-2	As Required	21.8	1829	168	76	97	-	-
T1-3	As Required	21.8	1829	168	58	76	-	-
DT36	Off-Center	13.2	876	163	-	91	340	81
DT48	Off-Center	17.7	1184	163	-	89	493	81

NOTES

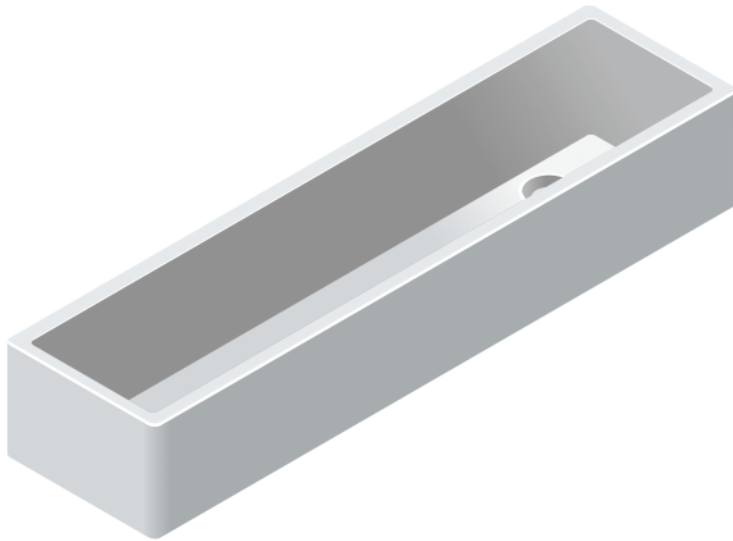
.....

.....

.....

.....

UNDERMOUNT TROUGHS



SECTIONAL UNDERMOUNT TROUGHS



DROPIN TROUGHS

Top-mounted DropIn troughs do not require additional supports and feature the same ease of installation as our popular DropIn sinks. Available in two sizes.

Troughs list and dimensions on Page 16.

ONE PIECE UNDERMOUNT TROUGHS

Closed-end undermount troughs are self-contained units which are installed under the worksurface. Available in three sizes.

SECTIONAL UNDERMOUNT TROUGHS

Open-ended sectional undermount troughs are molded in 72" [1829mm] sections, and can be joined together to form longer runs as needed.

Sections are fabricated to meet specifications, and ends are applied by Durcon. The drain hole for a standard outlet is cut in the 6" [152mm] flat section at the end of the deepest trough section.



NOTES

.....

.....

.....

.....

.....

.....

.....

.....

SEFA RECOMMENDED CHEMICAL & STAIN RESISTANCE TESTING

CHEMICAL Tested	TEST method	RATING
Amyl Acetate	A	1
Ethyl Acetate	A	1
Acetic Acid, 98%	B	0
Acetone	A	1
Acid Dichromate, 5%	B	0
Butyl Alcohol	A	1
Ethyl Alcohol	A	1
Methyl Alcohol	A	0
Ammonium Hydroxide, 28%	B	1
Benzene	A	1
Carbon Tetrachloride	A	1
Chloroform	A	1
Chromic Acid, 60%	B	3
Cresol	A	1
Dichloroacetic Acid	A	1
Dimethyl formamide	A	1
Dioxane	A	1
Ethyl Ether	A	0
Formaldehyde, 37%	A	0
Formic Acid, 90%	B	1
Furfural	A	1
Gasoline	A	0
Hydrochloric Acid, 37%	B	1
Hydrofluoric Acid, 48%	B	2
Hydrogen Peroxide, 30%	B	0
Tincture of Iodine	B	0
Methyl Ethyl Ketone	A	0
Methylene Chloride	A	1
Monochlorobenzene	A	1
Naphthalene	A	0
Nitric Acid, 20%	B	0
Nitric Acid, 30%	B	1
Nitric Acid, 70%	B	1
Phenol, 90%	A	1
Phosphoric Acid, 85%	B	0
Silver Nitrate, Saturated	B	1
Sodium Hydroxide, 10%	B	1
Sodium Hydroxide, 20%	B	1
Sodium Hydroxide, 40%	B	1
Sodium Hydroxide, Flake	B	0
Sodium Sulfide, Saturated	B	1
Sulfuric Acid, 33%	B	0
Sulfuric Acid, 77%	B	1
Sulfuric Acid, 96%	B	3
Sulfuric Acid, 77% & Nitric Acid 70%, Equal Parts	B	1
Toluene	A	1
Trichloroethylene	A	1
Xylene	A	1
Zinc Chloride, Saturated	B	0

TEST METHOD A

For volatile chemicals. A cotton ball is saturated with the test chemical and placed in a one ounce container (10mm x 75mm test tube or similar container). The container is inverted on the test material surface for a period of 24 hours. Temperature of test: 73° +/-4°F (23° +/-2°C). This method is used for the organic solvents.

TEST METHOD B

For non-volatile chemicals. Five drops (1/4 cc) of the test chemical are placed on the test material surface. The chemical is covered with a watch glass (25mm) for a period of 24 hours. Temperature of test: 73° +/-4°F (23° +/-2°C). This method is used for all chemicals listed other than solvents.

RATING

After 24-hours of exposure, areas are washed with water, then a detergent solution, and finally with isopropyl alcohol. Materials are then rinsed with distilled water and dried with a cloth. Samples are numerically rated as:

0 = No effect, 1 = Excellent, 2 = Good, 3 = Fair

PHYSICAL & FIRE TESTING

TEST Identification	TEST Description	RESULTS [imperial]	RESULTS [metric]
ASTM D785	Rockwell Hardness	109 [M Scale]	109 [M Scale]
ASTM D696	Linear Thermal Expansion	1.2 x 10 ⁻⁵ in/in°F	2.15 x 10 ⁻⁵ mm/mm°C
ASTM D570	Water Absorption	0.03% [24 hours]	0.03% [24 hours]
ASTM D790	Flexural Strength	12.6 kpsi	87 MPa
ASTM D790	Flexural Modulus	3240 kpsi	22.4 GPa
ASTM D792	Density	133.6 lb/ft ³	2.14 g/cm ³
ASTM D695	Compressive Strength	32.7 kpsi	226 MPa
ASTM D635	Fire Resistance	Self-extinguishing	Self-extinguishing
ASTM D3801	Burning Characteristics	30 seconds max	30 seconds max
	[Sample as Received]	burn time	burn time
ASTM D648	Heat Distortion Temperature	380°F	193°C
ASTM E84	Flame Spread Index	0 [Class A]	0 [Class A]
ASTM E84	Smoke Developed Index	300 [Class A]	300 [Class A]
ASTM E84	Time to Ignition	5 min 02 sec	5 min 02 sec
ASTM E84	Max Flamespread Distance	0.1 ft	3 cm
ASTM E84	Time to Maximum Spread	7 min 33 sec	7 min 33 sec

SUSTAINABILITY

Durcon is a member of the United States Green Building Council (USGBC) and our Epoxy Greenstone worksurfaces meet various Leadership in Energy and Environmental Design (LEED) standards, which may contribute toward LEED Certification. Durcon products can contribute to the following LEED credits:



- Credit MR 3.1 & 3.2 Material Reuse
- Credit MR 4.1 & 4.2 Recycled Content (Greenstone)
- Credit MR 5.1 & 5.2 Point of Manufacture / Point of Extraction
- Credit EQ 4.1 VOC Content (Health Care & School Buildings)

ADVANTAGES OF DURCON EPOXY RESIN



CHEMICAL RESISTANCE

Durcon Epoxy's monolithic, non-porous composition does not allow corrosive chemicals to seep in & cause delamination or swelling.



DURABILITY

Durcon is virtually synonymous with durability. The dense, heavy weight of our worksurfaces speaks to the product quality & longevity.



HEAT & FLAME RESISTANCE

Our epoxy is specifically conditioned for resistance to heat & flame, rating the highest-possible Class A on ASTM E84 testing.



LIGHT REFLECTANCE VALUE [LRV]

When illuminated, different colors & materials reflect or absorb unique quantities of light, with Durcon Epoxy competitively low & advantageous.



COMPANY HISTORY & EXPERIENCE

Since the 1960s, the Durcon company has used our knowledge of epoxy resin to create the best possible product solutions for laboratories.



MADE IN THE USA

Our products are 100% made in the USA, helping support American workers & reducing the risk of shipping delays and complications to your project.



SEFA MEMBER

Durcon is proud to be a founding member of the *Scientific Equipment and Furniture Association* (SEFA) since 1988.



AIA MEMBER

Durcon is an *American Institute of Architects* member & Continuing Education provider offering learning course credits.



ISO 9001:2015 CERTIFIED

Durcon has demonstrated its ability to consistently provide products that meet regulatory requirements per ISO 9001:2015.



ENVIRONMENT CONSCIOUS

Durcon Greenstone Epoxy is our sustainable option for lab-grade worksurfaces that does not compromise in performance or appearance.



INDOOR AIR QUALITY

All Durcon Epoxy products are certified Greenguard Gold by UL Solutions & have scientifically proven low chemical emissions contributing to indoor air quality.



SAFE & CLEAN

Durcon Epoxy products contain no asbestos, will not ignite, are non-conductive and excellent for ease of decontamination for use in radioactive areas.



APPEARANCE

With a smooth, low glare surface & monolithic, color-through composition, the appearance of Durcon Epoxy is essential to a high caliber, timeless lab design.



FOOD SAFETY

Formulary reviewed & certified NSF/ANSI 51, epoxy is safe to use in the construction of commercial food equipment based on U.S. FDA regulations.



VISUALIZER PRO

Virtually design your laboratory vision in real-time using Durcon's Visualizer Pro digital tool at www.durcon.visualizerpro.com



SCS CERTIFIED RECYCLED CONTENT

Greenstone is certified as conforming to the SCS Recycled Content Standard V7-0 for containing a minimum 10% post-consumer recycled content.

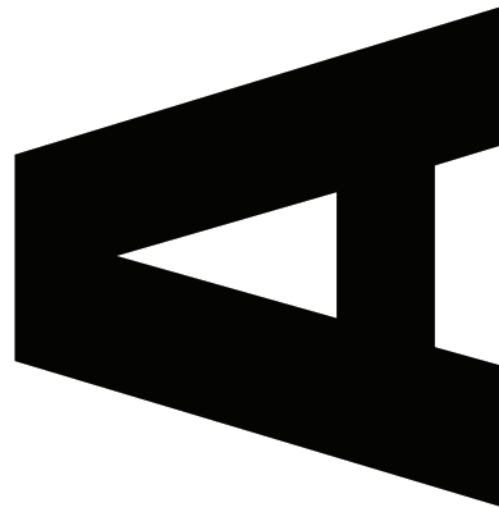
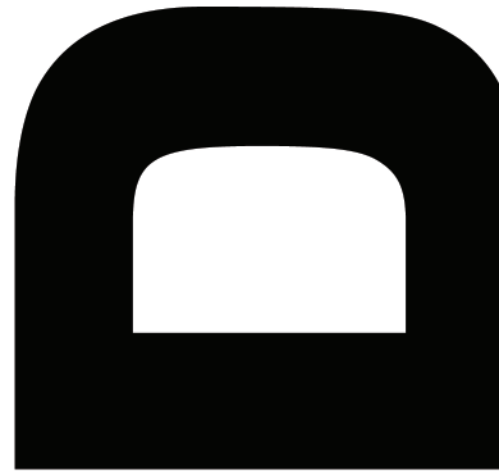
SAMPLES & ORDERS

To request product samples of Durcon epoxy, please reach out to a Regional Sales Representative or our Customer Service team at the contact info below, or scan the QR code.

✉ samples@durcon.com
☎ 1-512-595-8000

Visit us online at www.durcon.com





DURCON A WILSONART COMPANY
206 ALLISON DRIVE
TAYLOR, TEXAS 76574
WWW.DURCON.COM

512-595-8000
SALES@DURCON.COM